



California Domestic Water Company



# Seeking Senior Water Utility Worker

Are you a highly experienced Water Utility Worker with deep knowledge of the operation and maintenance of water treatment and distribution systems? If so, we would like to hear from you.

## The Position

Under the direction of the Director of Water Operations, the Senior Water Utility Worker is a journey-level class and is expected to independently perform the full scope of assigned duties and demonstrate experience in operating, proactively maintaining, and repairing water treatment and distribution systems.





# The Company

California Domestic Water Company is a not-for-profit mutual water company offering shareholders and their customers a reliable, local resource that eliminates or significantly reduces the need to purchase more expensive imported water from Northern California or the Colorado River.

Surrounded by all the amenities Los Angeles and Orange Counties have to offer, California Domestic Water Company has been providing water to shareholders since securing water rights in the San Gabriel River Watershed in the 1850s. Today, seven wells pump groundwater from the Main San Gabriel Basin, feeding three treatment facilities and more than 30 miles of pipeline.

The Company's shareholders – Suburban Water Systems and the cities of Brea and La Habra – supply a population of about 225,000 in their service areas. The company's system begins in Los Angeles County and ends in north Orange County, crossing through El Monte, Industry, Whittier, La Habra, La Habra Heights, and Brea. Along the way, strict quality testing protocols ensure drinking water meets all state and federal safety standards.

The Company is led by an innovative Board of Directors and a modest and resourceful professional staff that plans for today and looks ahead to a future of continued water sustainability.



## Our Values

Driven by our staff, our values guide everything we do. They are the cornerstones of the Company's work ethic and define how we treat each other.



### Integrity

California Domestic Water Company is committed to a culture of integrity where openness, trust and accountability come first. We do what we say we are going to do and foster exemplary standards day in and day out.



### Communication

California Domestic Water Company's core culture is bound by an environment of constructive, honest, communication where collaboration and compassion lead to understanding and thriving relationships among employees, directors, shareholders and the communities they serve.



### Evolving

Innovation, versatility and adaptability are the beacon of California Domestic Water Company's value system. We are dedicated to resiliently embracing challenges and continually improving with the future in mind.



### Teamwork

Our pledge to work collectively toward common goals is the foundation of California Domestic Water Company's success. We strive to help one another radiate confidence, building on our strengths and honoring each other's feedback. There is no star of the show, and together, we are always getting better.



### Respect

California Domestic Water Company prioritizes a fundamental standard of respect across the organization. We value diversity in our perspectives and admire each other's skills, talents and experiences as we serve our internal and external customers with kindness and gratitude.



## Essential Functions

- Operate and monitor water production equipment and facilities, including wells, motors, booster pump stations, meters, and storage tanks; coordinate general inspections and repairs.
- Monitor wellhead pressures, drawdowns, specific capacity, flow rates, and total water produced and pumped.
- Run and maintain treatment technologies, including a liquid chlorine injection system, acid injection system, air stripper treatment towers, ultraviolet (UV) light reactors, and ion exchange vessels.
- Organize and schedule the collection of water quality samples at identified sample points for source water supplies, treatment facilities, and the distribution system; analyze and evaluate water quality sample results; follow protocols and guidelines to ensure blending operations meet all permit requirements and compliance monitoring standards of the State Water Resources Control Board – Division of Drinking Water (SWRCB-DDW).
- Assist and coordinate water system start-up and/or shut-down procedures.
- Operate and use Supervisory Control and Data Acquisition System (SCADA) software to monitor water system operations; make adjustments to SCADA set points and controls based on changes in water demand and water supply.
- Organize and support basic facilities and landscape maintenance.



## Knowledge & Abilities

### Knowledge Of:

- Principles, practices, equipment, materials and methods used in water treatment and delivery system maintenance and operations
- Principles, methods and practices used in building maintenance, grounds maintenance and landscaping
- Supervisory principles and practices, including planning, organizing and assigning work, training and appraising staff, and dealing with personnel issues
- Supervisory Control and Data Acquisition System (SCADA) best practices
- Work safety standards and regulations
- Principles of budget development and expenditure control
- Pipeline repair practices.

### Ability To:

- Plan, organize, direct and coordinate the work of staff
- Lead and direct the operations, services and activities of the maintenance department in the absence of the Water Utility Manager
- Select, supervise, train and evaluate staff
- Delegate authority and responsibility
- Ensure the proper maintenance, construction, operation and repair of Company equipment and facilities
- Interpret and apply federal, state and local policies, laws and regulations
- Communicate clearly and concisely, both orally and in writing
- Establish and maintain effective working relationships with those contacted in the course of work
- Analyze complex maintenance and operations problems
- Maintain effective audio-visual discrimination and perception needed for successful job performance
- Make sound decisions and demonstrate intellectual capabilities
- Effectively represent the Company's operations function with the public, other government agencies, contractors, developers and professional consultants





# Experience & Training

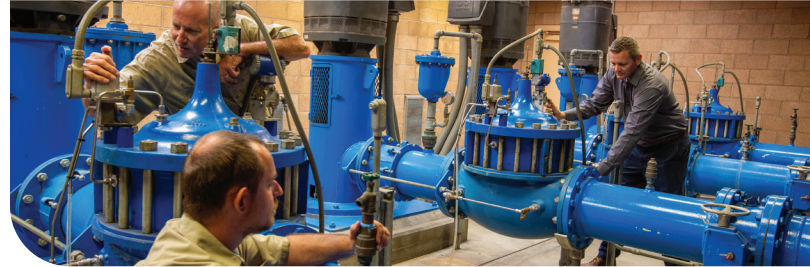


## Required:

- Five or more years of broad and progressively responsible experience in the operation, maintenance, installation, repair, replacement, inspection, and/or water quality testing and sampling of water production and pumping equipment and facilities, water treatment technologies, and/or water distribution systems.
- High school graduation or G.E.D. equivalent.
- Completed specialized training, coursework, or certification in water science, water technology, or related field.
- SWRCB-DDW Distribution Operator D3 certification and Treatment Operator T3 certification.

## Desirable:

- Specialized training, coursework, or certification in water quality monitoring and compliance, water treatment operations, and/or water distribution operations.
- Ability to obtain a SWRCB-DDW Distribution Operator D4 and Treatment Operator T4 within one year of appointment to this position.



# Compensation and Benefits



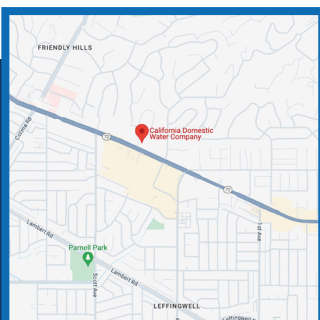
Certification Level	Salary Minimum	Salary Maximum
T3/D3	\$72,012	\$97,224
T4/D4	-	\$106,824
T5/D5	-	\$116,424

- Fully covered employee and dependent medical, dental, and vision insurance
- Life insurance
- Short-term disability
- Long-term disability
- Accidental death and dismemberment insurance
- 401(k) Plan participation & contributions
- Personal time off credit accrual, including vacation, holiday, and sick leave
- 9/80 alternative work schedule options



# How to Apply

Interested applicants may submit their resumes to [resumes@caldomestic.com](mailto:resumes@caldomestic.com) or mail them to P.O. Box 1338 Whittier, CA 90609. Resumes will be accepted until there are a sufficient number of highly qualified applicants from which to make a selection.



## California Domestic Water Company

15505 Whittier Boulevard  
 P.O. Box 1338, Whittier, CA 90609  
 (562) 947-3811 • Fax (562) 947-8843

[CalDomestic.com](http://CalDomestic.com)

